

How To Configure Dial Up access for Windows 98/XP/2000

[How to check if modem is properly working](#)

[How to configure network and dial-up setting](#)

[How to configure browser for ipNX Internet Access](#)

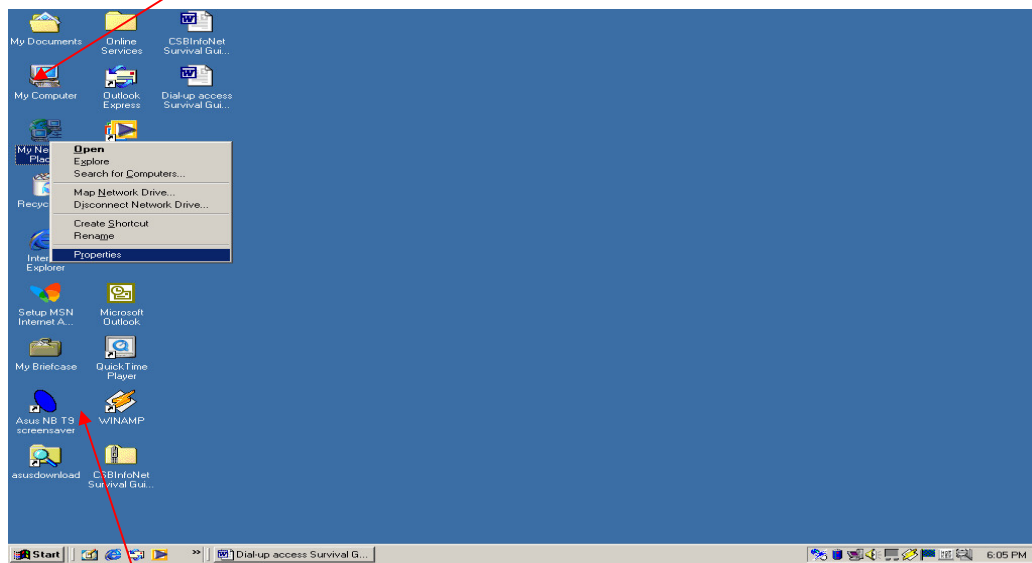
[How to Dial-up to the network](#)

[How to access email using web browser \(Internet Explorer \)](#)

A. How to check if modem is properly working [Back to Top](#)

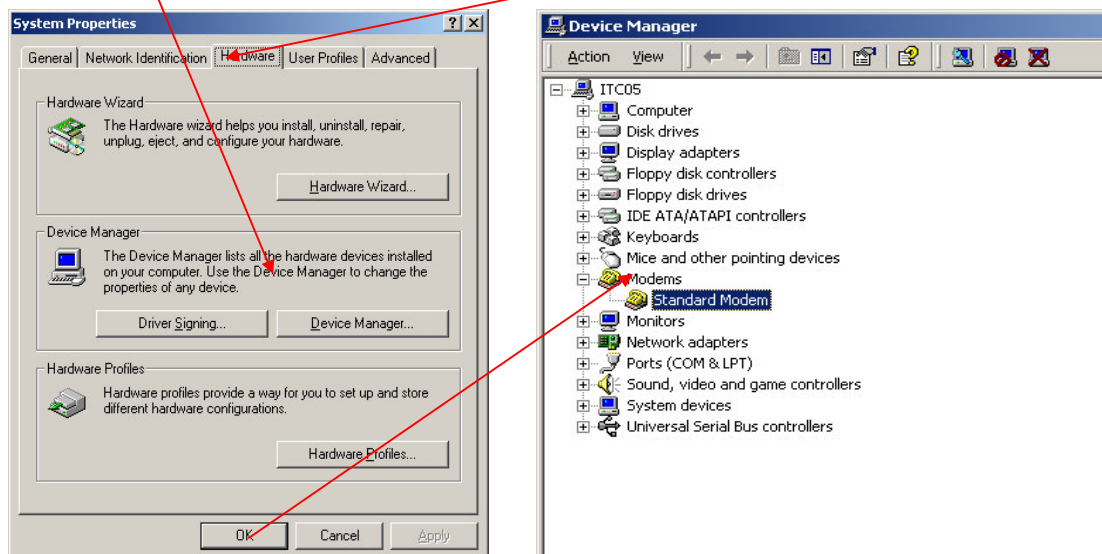
- To check **Systems Properties**. Assuming that you have installed your modem (check your modem's user manual for installation).

1. Right click on **My Computer**



2. Click on **Properties**

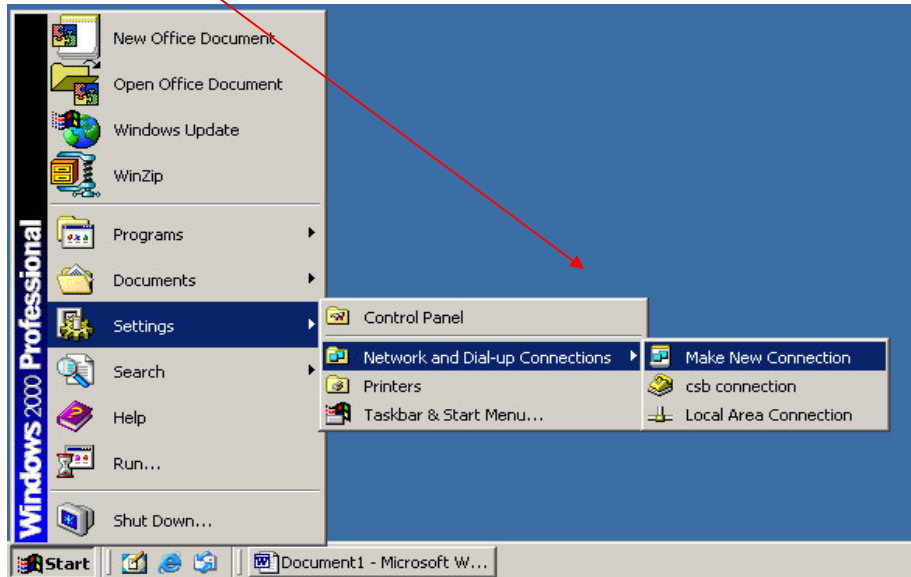
- When **System Properties** dialog box appears. Click on **Hardware tab** and click **Device Manager**.



4. Check on **Modem** and Network Adapters if your modem exists.
Note: If you found an exclamation point on the modem installed, it means it's not working properly.

B. How to configure network and dial-up setting [Back to Top](#)

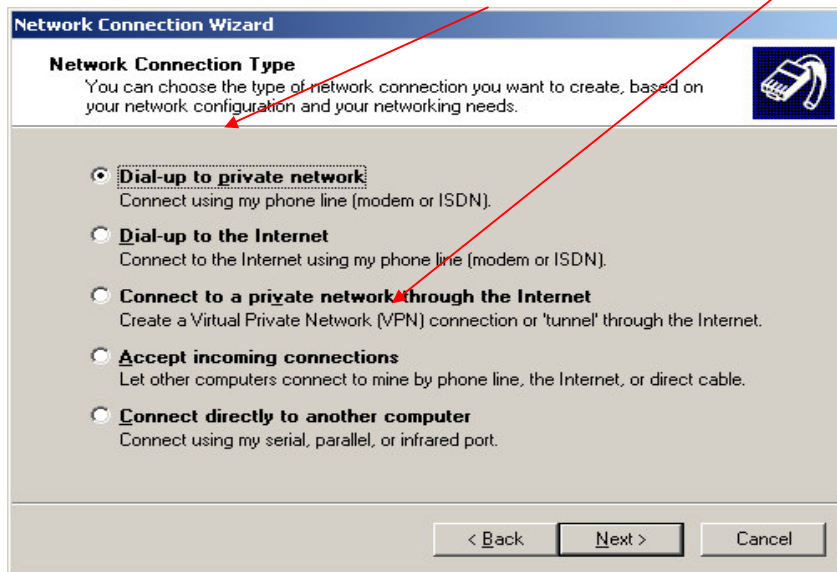
1. Select the **Make New Connection** on the **Start, Settings, Network and Dial up Connection** menu.



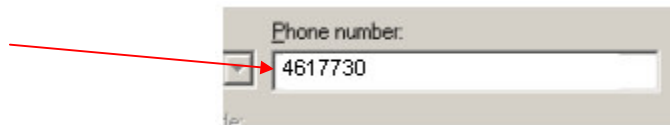
2. On **Network Connection Wizard**, Click on **Next**.



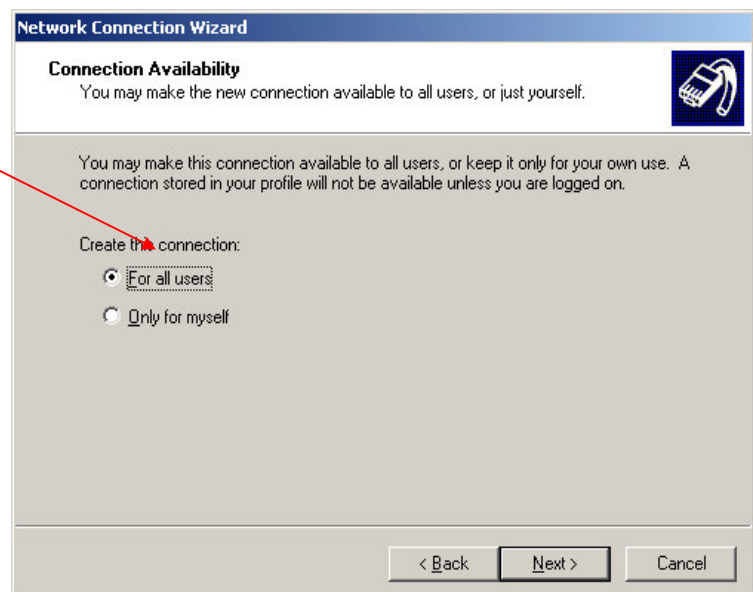
3. On the next window window, select **Dial up to Private Network**, and then click on **Next**.



4. Enter the Phone Number, **4617730** and then click **Next**



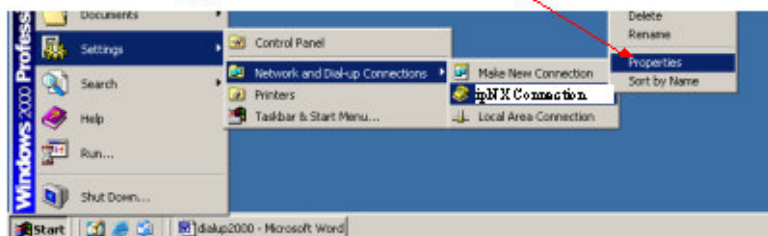
5. In the **Connection Availability** window, you may select the **For all users**, to provide connection to person who will use the computer. Then click next.



6. Type the name of the connection, **'ipNX Connection'** and then click **Finish**.

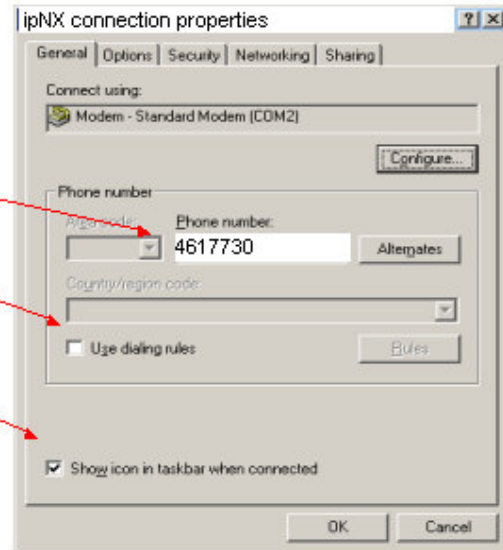


7. To configure dial-up, **Right Click** on the 'IPNX Connection' from the **Start, Settings and Network-Dial Up** connection and select **Properties**.



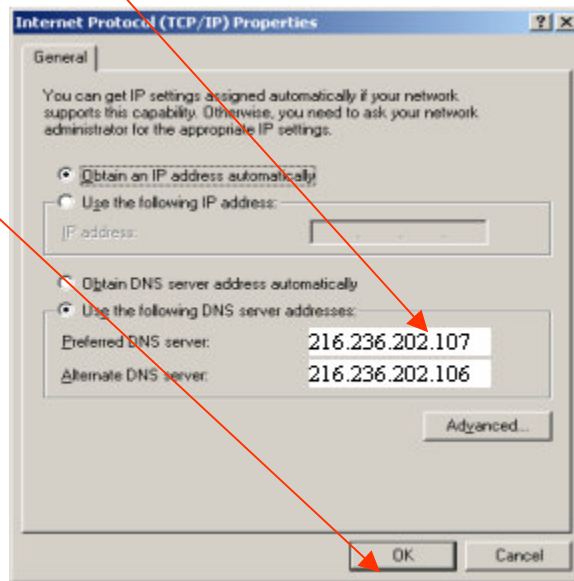
8. On the '**IPNX connection Properties**' dialog box under the **General Tab**, enter the phone number, **4617730** and **un-check** the 'Use Dialing Rule'

Preferably, place a **check** mark in the connection status indicator.



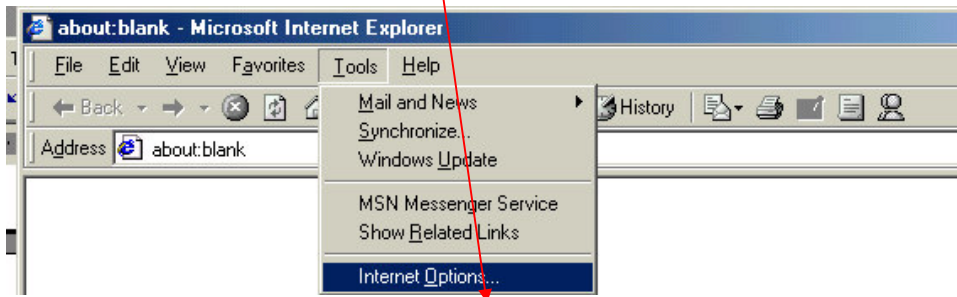
9. Under the **Network tab**, select the **PPP, Windows....** And then highlight the **Internet Protocol (TCP/IP)** and Click **Properties**.
A dialog box will appear, and then enter the **DNS server Addresses**.
Preferred: 216.236.202.107
Alternate: 216.236.202.106

Click **OK** when finished.

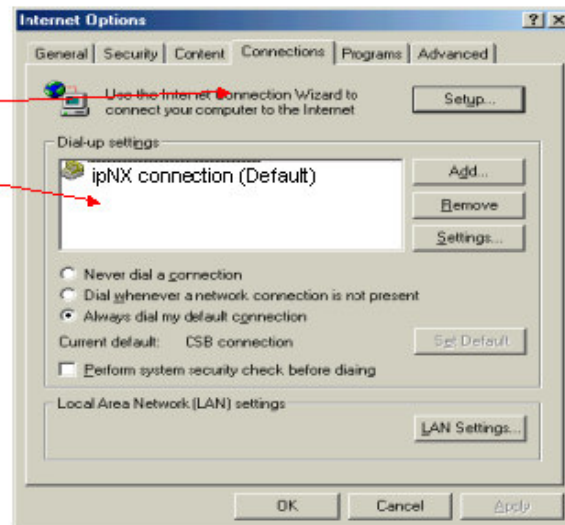


C. How to configure browser for ipNX Internet Access [Back to Top](#)

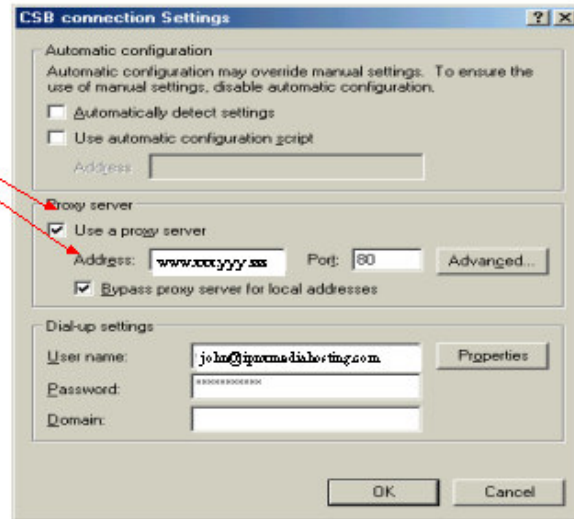
1. Open the Internet Explorer application from the **Start, Programs** menu then click on **Tools** and select **Internet Options**.



2. In the **Internet Options** dialog box, select **Connections** tab and then highlight your connection (**IPNX Connection**). Select '**Always dial my default connection**'. To check the settings click on the **Settings** button.



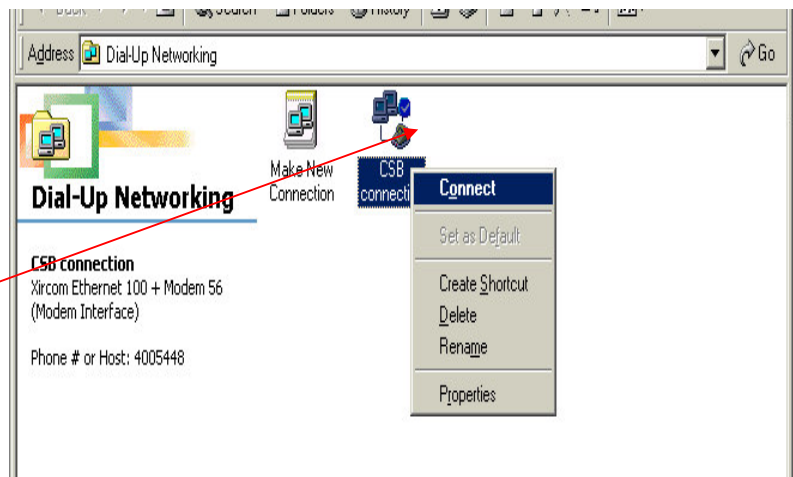
2. After clicking the settings button, place a check mark on **Use a proxy server** and **Bypass proxy server for local addresses**. Type **proxy.ipNX** and the **port is 80** under the Address name. Click **OK** when done.



D. How to Dial-up to the network [Back to Top](#)

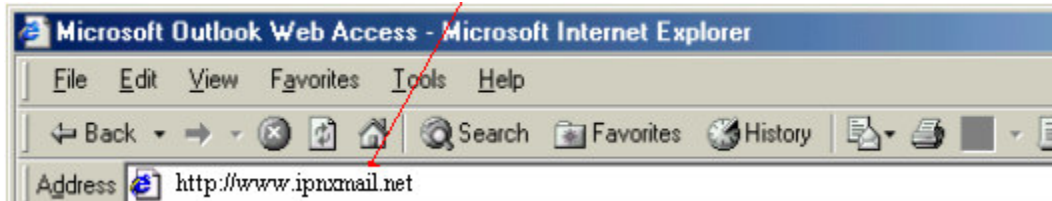
1. To dial to IPNX Infonet, go to Dial-Up Networking from the **Start** menu and then select **Settings** and **Network and Dial up Connections**. Right Click on the **ipNX connection** icon then select **Connect**.

Enter your **Username; Password and the Domain is IPNX** and then click Dial.
*Dial up no. is **'4617730'**

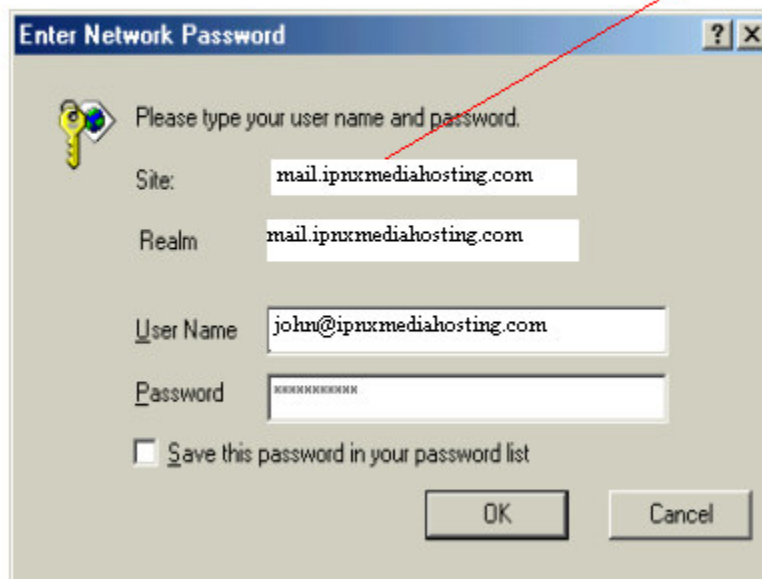


E. How to access email using web browser [Back to Top](#)

1. Once connected in the Internet either via IPNX Dial connection or other ISP, enter the URL address <http://www.ipnxmail.net> from your browser.



2. After **Enter Network Password** dialog box appears, **Username** (i.e. **john@ipnxmediahosting.com**) and your **Password** and then Click **OK**.



2. You may now view your **Email messages** by double clicking the desired/unread messages. Once you're done, click on the **X** button to quit.